



# STUDENT CAMPUS





Limerick is an important centre of higher education in Ireland. Today, Limerick is home to a number of higher-education institutions including University of Limerick, Limerick Institute of Technology and Mary Immaculate College. Limerick has a student population of over 20,000.

---





Our college is well situated in the heart of the town centre, surrounded by retailers, restaurants, bus stops and the historic milk market. All locations are easily reached on foot or by bus from popular neighbourhoods.

Facing a brand-new culture is often a challenge, however, the people and the school you choose to help you with this challenge can utterly shape your experience! Give yourself the chance to live abroad, to live in a brand-new culture and improve your English skills with indoor and outdoor activities.

**From Japan to Brazil or from South Africa to Europe, Student Campus can help you to live your dream on the beautiful Emerald Isle.**



**Leandro**  
**Spanish Student**

"Going to Student Campus was the best decision I could have ever made. It wasn't easy for me to start a new life far from home, but Student Campus helped me and made it easy for me. They helped me to achieve all my goals and I will always thank them all their effort"



**Waldefran**  
**Brazilian Student**

"As far as I'm concerned, in Student Campus I'm able to improve my English in a general way: pronunciation, reading, writing and listening. The best part is that I'm learning not only about grammar points but also about Irish Culture with some native Irish English teachers"



**Heyrin**  
**South Korean Student**

"First, I worried about the price and moving from Dublin to Limerick. The school is perfect. The staff team are very kind and friendly. The Class is dynamic and the teachers made me speak English more and more. (At that time, I had a hard time speaking English). If I earn more money, I will stay here longer."



# ACADEMIC & MARKETING TEAM



Hi everyone!

I'm Susan from UK. I have been in English language education for 29 years and have been a teacher, a translator and the owner of a school. I have taught English to students in and from many different countries and in my travels have worked in Germany and Italy.

I love learning languages, hiking, drawing, travel and learning about different cultures. I am really looking forward to seeing you all in the school and working together to get you to where you want and need to be in your careers and lives.

My motto, "Never stop at good, when excellent is just around the corner." In the meantime let's stay safe.



**Susan Porter**  
Director of Studies







## Leszek Ochalek

### Senior Teacher

Hello students,

For almost two years, Student Campus has provided English courses for students from all around the world. Our school provides a friendly and professional atmosphere, with excellent learning facilities and a dedicated team giving each student individual attention.

We hope you will have the best possible experience whilst studying at Student Campus and also enjoy the beauty of Limerick and the surrounding area.

## Leticia Bastos

### Head of Marketing and Sales

Hi there!

With magnificent support provided by our Marketing team, you will be able to embark on this fantastic experience of going on an exchange programme on the Emerald Isle.

From setting up your visa appointment at the immigration office to accompanying you to the bank to open your Irish bank account, our team will be there to back you up on whatever needs you may have.





# COURSES: GENERAL ENGLISH

When you arrive, you will take a placement test and be placed accordingly based on the CEFR level. Classes start every Monday on a continuous enrolment. There is no time limit on how long you should stay in a level, but generally, when you start a level you should be ready to move up after approximately 12 weeks.

Weekly progress checks and monitoring from teachers will help you develop your skills. The aim of the General English course is to:



**15**  
Maximum

## MORNING

- 01 **DURATION**  
1 to 25 weeks  
(15 hours per week)
- 02 **START DATES**  
Every Monday (except holidays)
- 03 **TIMETABLE**  
Monday to Friday  
From 9 am to 10.30 am (15min Break)  
From 10:45 am to 12:15 pm
- 04 **LEVELS**  
Beginner > Elementary > Pre-Intermediate  
Intermediate > Upper-Intermediate  
Advanced > Proficiency

## AFTERNOON

- 01 **DURATION**  
1 to 25 weeks  
(15 hours per week)
- 02 **START DATES**  
Every Monday (except holidays)
- 03 **TIMETABLE**  
Monday to Thursday  
From 1 pm to 3:00 pm (15min Break)  
From 3:15 pm to 5.00 pm
- 04 **LEVELS**  
Beginner > Elementary > Pre-Intermediate  
Intermediate > Upper-Intermediate  
Advanced > Proficiency

- ✓ Develop your four skills (reading, writing, listening and speaking) by using authentic and functional language
- ✓ Enhance your communicative skills so you are able to communicate effectively both inside and outside the classroom
- ✓ Develop knowledge and understanding of English grammar and confidently apply it accurately
- ✓ Expand your vocabulary
- ✓ Enable yourself to have the option to further study



# TEACHING METHOD

*Our teachers have a wealth of knowledge and experience and are excited to apply this to their lessons while helping students achieve their objectives!*



The focus in our school is to encourage communication and every activity focuses on developing the four skills of language learning. All students who study with Student Campus are provided with a course book for their level.

The teacher will guide you through this book using a variety of methodologies and activities to ensure that you feel confident using the target language.

Teachers incorporate Irish culture into their lessons so you can learn more and immerse yourself into your new home!

Classes are also taken outside in various locations around the city and it is linked to the topic of the unit to help students get a true experience of the language.

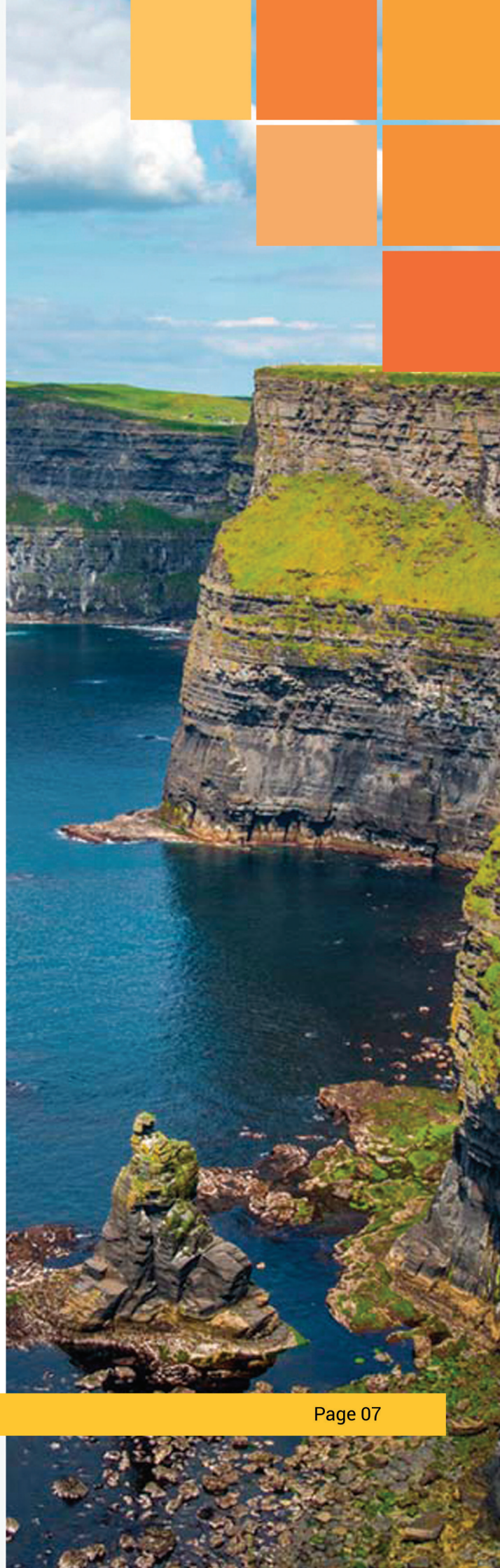
Classes have weekly tests to assess student progress and this allow you to identify areas in which you need to improve.

Teachers' and the DoS are available to discuss progress and set achievable goals.





Why choose Student Campus?	08
Courses: General English	10
IELTS Preparation	11
CAE Preparation	11
School Accreditations	12
Why choose Limerick?	16
Nightlife	17
Getting Around Limerick	18
Extra Activities	20
Other Facilities	21
Student Campus Application	22
Media Channels	23
Productions Filmed in Ireland	24
Famous Irish Actors and Singers	25
Academic Calendar 2022	26
Public Holidays in Ireland 2022	27





# WHY CHOOSE STUDENT CAMPUS?

Our school is located in the heart of Limerick City. You have everything you will possibly need within reach which will make your stay easier. Restaurants, shops, leisure facilities etc. can be reached by a short bus journey or on foot.



The building has four floors with plenty of space to learn English and get to know Irish culture better.

A

In our canteen, you can buy food and sit comfortably whilst you enjoy your meal.

B

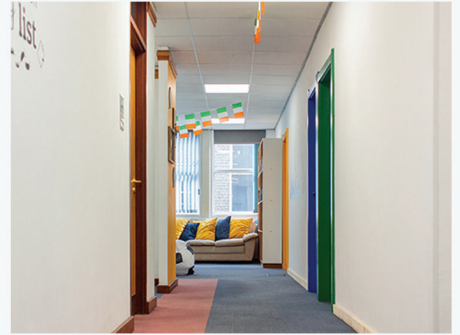
There is a microwave and kettle in which you can use to heat your food and make yourself a cup of tea and coffee.

At Student Campus, you will also find a library, computers, television, games, and lounge space to relax and enjoy your free time. All floors have access to internet using WIFI. In addition, the library has a vast collection of books for you to use and consult.

Our academic department is managed by an experienced Director of Studies and a team of well-qualified teachers. At our school, students have all the support and assistance from the day they set foot on the island until their departure. We believe that a cultural exchange is just as important as learning the language itself.

For those who are not able to communicate confidently in English, it is possible to speak your mother tongue with a native of your country, so as that they provide private support for each student during their stay in Ireland.







# IELTS PREPARATION

We offer the International English Language Testing System (IELTS), which is accepted as evidence of English language proficiency by over 9,000 organisations worldwide.

The General Training focuses on the skills that you will need in social and workplace contexts.

This preparation programme aims to help you develop the ability to achieve the highest possible scores for your level.

# CAE PREPARATION

Cambridge qualifications and tests are accepted by over 20,000 organisations worldwide, and they provide the English language skills to communicate and succeed in the real world.

Preparation for Reading, Writing, Listening and the inclusion of timed tests, examination practice as well as preparation and practice for speaking exam.

The programme covers all four skills and pays particular attention to grammar and lexical areas commonly tested in the exam. Additional practice in areas of weakness are assigned for homework.

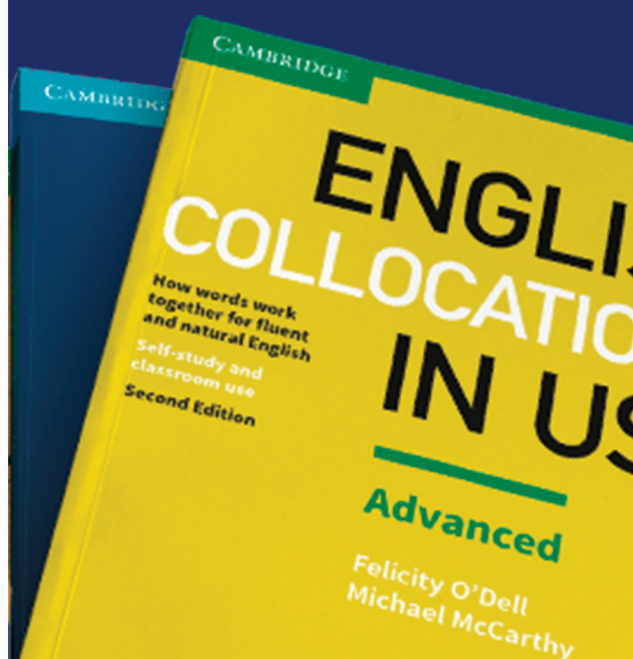


## LEVELS REQUIRED

- INTERMEDIATE
- UPPER-INTERMEDIATE
- ADVANCED



*The exam tests your four language skills:  
Reading, Writing,  
Listening and Speaking.*





# SCHOOL ACCREDITATIONS



This cover is intended to meet the needs of non-EEA students traveling to Ireland in the event of accident or illness.

It also intended to meet the needs of students attending educational institutions that are not financially supported by the Irish state where there is a legal obligation to hold this Insurance. In the event of an institution closing due to financial issues or its accreditation is withdrawn and you are unable to finish your course, you will be covered.



Progressive College Network

Progressive College Network is a newly formed organization to meet the demand for an alternate representative body for the private college community in Ireland, which tries to promote Ireland as a high-quality education destination.

Student Campus is a member of this organization.



The International English Language Testing System (IELTS) measures the language proficiency of students who want to study or work where the English language is used as a means of communication.



Interim List of  
Eligible Programmes

The fact that a provider and courses are listed on ILEP means that in accordance with Ireland's student immigration policy, attendance at that college in respect of one of their listed full-time courses on ILEP is an eligible purpose for a non-European national coming to Ireland.

ILEP does not guarantee the quality of the institution but if a provider is listed on ILEP they will have met certain criteria including the mandatory provision of learner protection in respect of enrolled non-European students.





ELT Ireland is a network for professionals involved in all aspects of English Language Teaching that promotes learning, development and best practice through the sharing of knowledge and experiences.

The purpose of ELT Ireland is to establish a network of teachers, supervisors, managers and researchers who are committed to improving teaching in English as a Foreign or Second Language in Ireland.



TIE has been designed for all students over the age of 18 of all abilities and motivations following either long or short courses in language schools or other educational institutions.

TIE is a learner-centred exam which is flexible, i.e., designed to recognize and accommodate the needs and interests of each learner whatever their level of English, age, cultural or educational background. The test is task-based with the content chosen by each individual learner and can, therefore, be used to assess learners.



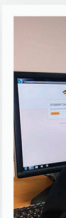
**Cambridge Assessment  
English**

Authorised Exam Centre

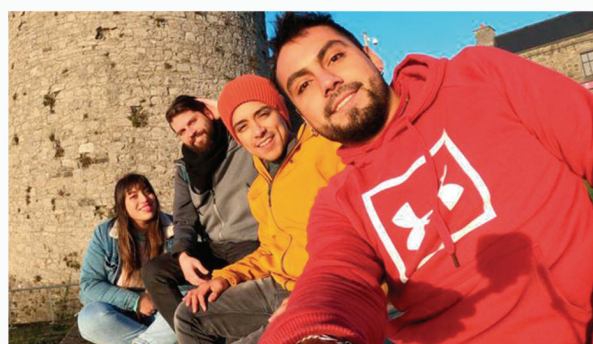
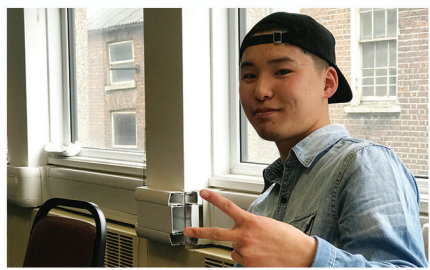
The University of Cambridge offers students the world's most recognised range of English qualifications in the form of Cambridge ESOL examinations.

Cambridge English (also known as ESOL) is a department of Cambridge University. Their English exams: Proficiency (CPE) and Advanced (CAE) are recognised around the world by thousands of Employers, Universities and Government Ministries as proof of ability to use English.











# WHY CHOOSE LIMERICK?

Over the last number of years, Limerick has really concentrated on improving the city, especially near the river Shannon which encompasses the city. Now you can find lots of monuments and statues as you walk along the river.

There are lots of new bars in which you can stop in for a quick drink after a long day of exploring the city and feeding the numerous pigeons that gather at the river. It is a very beautiful place to go for a walk.



## THE RIVER

Traditional Irish Music is one of the main attractions in Limerick. Don't be surprised if you walk into a bar/pub and find a group of people playing typical Irish instruments. It creates a great atmosphere and everybody enjoys it.

After a while you will find yourself clapping along to the music, laughing and joking with everybody in the pub.

If you want to get into to the spirit, why not go out and buy a musical instrument for yourself? Tin whistles are inexpensive and can be found in many shops.

*The tin whistle, uilleann pipes and the banjo are just some examples of excellent Irish instruments.*





# NIGHTLIFE

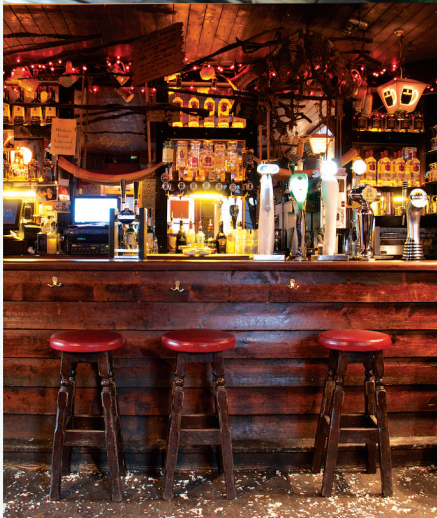


The nightlife in Limerick has really picked up recently. With a lot of new pubs and nightclubs now open in Limerick, Saturday night is full of fun. 101 and Nancy's are a popular choice amongst students for a night out

If you are more interested in Rock n Roll music, then Costelloes is the place for you. Located near the train station, Costelloes is one of the oldest pubs in Limerick. You are guaranteed to enjoy your night if you go there. Excellent music and some of the nicest people you could find.

A popular pub for a lot of tourists is Nancy Blakes, located at 19 Upper Denmark Street. It is a great pub to catch up with friends and talk about the week.

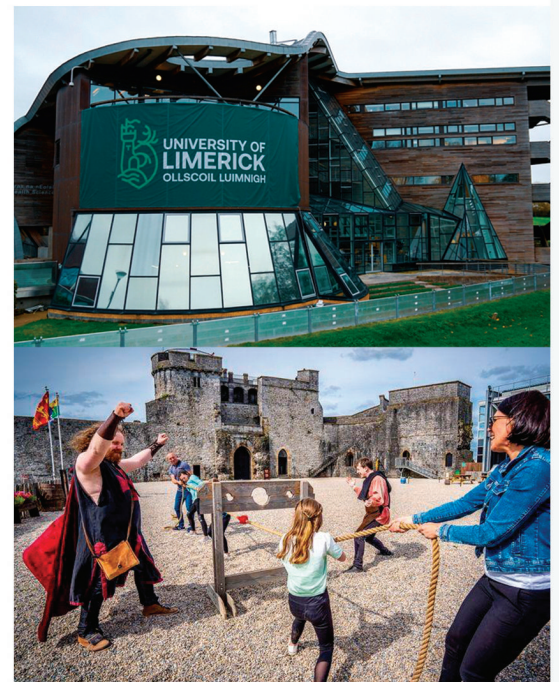
Nightclubs, such as, Icon are perfect for when you want to dance the night away until late in the morning. It is situated next to Smyths bar which is perfect. You can have a few drinks in Smyths before going into the Icon to dance and make new friends.



## PLACES OF INTEREST

The University of Limerick is in the top 3 colleges in Ireland for its idyllic campus. You can stroll along the campus river walk from the city centre right out to UL after a long day of studying. The campus itself is enormous so it is full of beautiful nature walks and buildings.

King Johns castle is also a fantastic attraction in Limerick. It uses 3D touch technology and life size models to help you relive over 800 years of dramatic local history. It is definitely something to add to your bucket list. Don't miss out on that!





# GETTING AROUND LIMERICK

Transport in Limerick is very convenient compared to other cities around Ireland.

With quite a lot of different options to choose from, it will be no problem for you to get around. The 304 bus is one of the most popular bus routes in Limerick which takes you from the city centre, out to the Crescent Shopping Centre (for all your shopping needs) and also to the University of Limerick.

The University of Limerick is home to so many beautiful attractions that you simply must visit while you are here.

If you are Eco-friendly and would prefer to cycle, this is also a great option. Not only are you exercising but you are also helping the environment - killing two birds with one stone!



There are Coca-Cola bicycles found in many different parts of the city and are very cheap to rent for the day.



Also, with a lot of double decker buses driving around Limerick, you will have no problem finding a seat on the bus after a long day of studying and/or working. There are so many seating options that nobody is left without a seat.

**Friendly bus drivers and an affordable price means that the bus is sure to be your number one option.**

Taxis are also an option. There are so many taxi ranks situated around Limerick City. There is no problem at all in trying to locate a taxi with ranks located in the busiest sections of the city. There is one right outside the train station which will come in handy after your travels to other counties.

You also don't have to return your bike to the place where you rented it. It can be left at any Cola-Cola bike station in the city.



The train station is an option if you would like to enjoy a trip out of the Limerick for the day.



# EXTRA ACTIVITIES

We at Student Campus believe that learning English can also be fun and enjoyable. As part of this amazing experience of learning, the student can also attend free extras classes, designed especially to help you improve your English skills.



Students can attend Grammar classes to get a hang of that grammar tense that you find the trickiest. For those who are only starting can also get the keywords that help a lot over on a daily basis in the vocabulary classes.

We have a variety of extra classes with our students in mind. It is always conducted by our enthusiastic teachers with focus on conversational skills that will further aid you to speak to natives outside of the classroom and pick up on different expressions used by those walking on the streets.



If you need help with your CV, we also have a CV workshop, where you can bring your CV and get tips on how to build, change or even improve it. This class will most certainly give you the upper hand when it comes to applying for positions and doing it interviews in Ireland.

Every day you will find a fun and different activity after regular classes all designed according to your needs to help you improve your English skills faster!



## OTHER FACILITIES

### HEALTH INSURANCE

It is a requirement for Study Visas of non-EU students to take out private health insurance. For non-EU students, who do not have current health insurance arrangements in place, Student Campus will arrange health insurance.

These policies cover emergency medical expenses, emergency travel and repatriation expenses, and are compliant with the applicable visa regulations.

### ACCOMMODATION

Where you choose to live is a very important decision in your study abroad experience. We manage two well-serviced accommodation to help you while you find a permanent place to live.

If student accommodation is not an option for you, there are other options to suit your lifestyle, budget and needs.

### STUDENT SUPPORT

All our Student Support team is committed to providing you with assistance during your whole experience abroad.

You will be assisted from the moment you leave your country right up to the moment you fly back to your country.

### STUDENT CAMPUS EXCLUSIVE SUPPORT

Is it your first time coming to Ireland? Don't worry! We will pick you up at the bus stop in the city centre.

As part of the support, we also offer an exclusive pick-up service, where we will collect you at the bus stop in the city centre, go with you to do your first shopping trip at the supermarket in order to make you feel comfortable and safe.





# STUDENT **CAMPUS** APPLICATION

With the new Student Campus App, you can quickly check your attendance from anywhere, check our extra activities, watch our latest videos, and much more!

Have a look at the features on the app, which are designed to make our student's life easier:

## ATTENDANCE

If you would like to check your attendance, you can register a new user using your Student ID. This information was given to you when you started your class with Student Campus, and it is also available in your enrolment letter.

## REQUEST FORM

If you would like to request any documentation from our Academic team, such as, certificates, holidays letters, attendance letter or any other doubts you might have you can click on 'Request Form' and fill out the form.

## IMPORTANT DATES

We are always preparing the best activities for you, so keep an eye on every important date and event that is happening at Student Campus!

Once you download the app, you can click in:



01

Attendance

02

Register New User

03

Insert your Student Number

04

Email

05

Password

06

Confirm Password

After that, you need to click on 'Register Now' and you are all set.



# MEDIA CHANNELS

## Have you ever seen our Social Media Channels?

Student Campus is connected to all Social Media platforms. Instagram, Facebook and also on Youtube. Subscribe to stay tuned for everything happening at the school and in Limerick.

IG: studentcampuslimerick

Facebook: studentcampuslimerick

Youtube: studentcampuslimerick



## STUDENT AREA

Student Campus offers many services to our students. You can check all the services to make your life easier and faster such as External Exams, Admission Criteria, and all the Student Campus Policies.

If you have any question about our services or policies, feel free to click on '**Contact Us**', and drop a message or email.

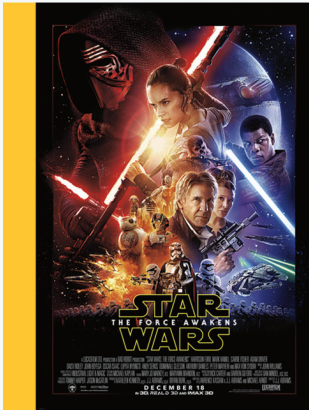
Download the app now and enjoy the experience!

*If you need any direct support or have suggestions for the app, you can send an email to [alan@studentcampus.ie](mailto:alan@studentcampus.ie).*





# PRODUCTIONS FILMED IN IRELAND



Star Wars Episode VII



Saving Private Ryan



Ella Enchanted



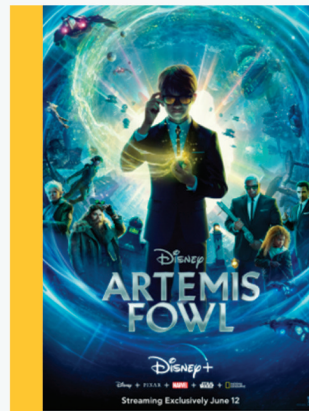
Leap Year



Derry Girls



The Young Offenders



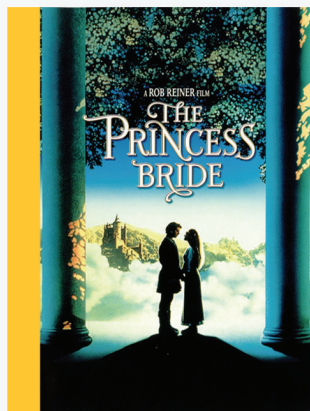
Artemis Fowl



The Italian Job



Harry Potter and the Half-Blood Prince



The Princess Bride



Shadow Dancer



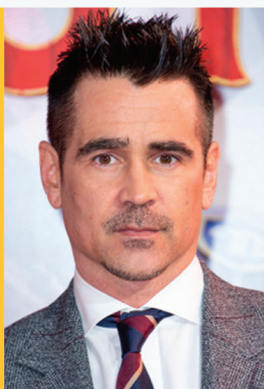
P. S. I Love You



# FAMOUS IRISH ACTORS AND SINGERS



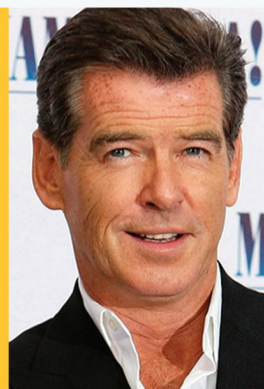
**Saoirse Ronan**



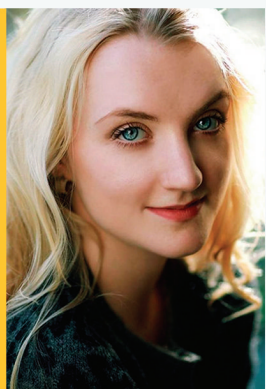
**Colin Farrell**



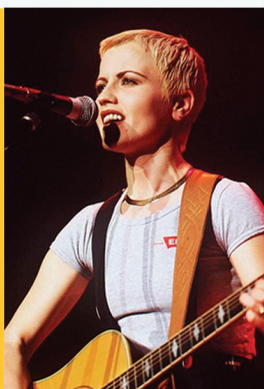
**Cillian Murphy**



**Pierce Brosnan**



**Evanna Lynch**



**Dolores O'Riordan  
(The Cranberries)**



**Snow Patrol**



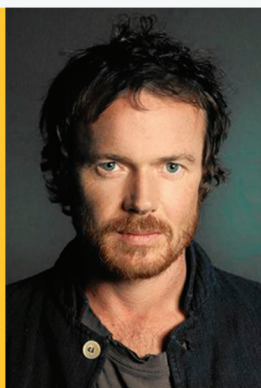
**Niall Horan (One Direction)**



**Bono Vox (U2)**



**Hozier**



**Damien Rice**



**Thin Lizzy**



# ACADEMIC CALENDAR



## ACADEMIC CALENDAR

# 2022

JANUARY						
MON	TUE	WED	THU	FRI	SAT	SUN
					01	02
03	04	05	06	07	08	09
10	11	12	13	14	15	16
17	18	19	20	21	22	23
24	25	26	27	28	29	30

FEBRUARY						
MON	TUE	WED	THU	FRI	SAT	SUN
	01	02	03	04	05	06
07	08	09	10	11	12	13
14	15	16	17	18	19	20
21	22	23	24	25	26	27
28						

MARCH						
MON	TUE	WED	THU	FRI	SAT	SUN
	01	02	03	04	05	06
07	08	09	10	11	12	13
14	15	16	17	18	19	20
21	22	23	24	25	26	27
28	29	30	31			

APRIL						
MON	TUE	WED	THU	FRI	SAT	SUN
				01	02	03
04	05	06	07	08	09	10
11	12	13	14	15	16	17
18	19	20	21	22	23	24
25	26	27	28	29	30	

MAY						
MON	TUE	WED	THU	FRI	SAT	SUN
						01
02	03	04	05	06	07	08
09	10	11	12	13	14	15
16	17	18	19	20	21	22
23	24	25	26	27	28	29

JUNE						
MON	TUE	WED	THU	FRI	SAT	SUN
		01	02	03	04	05
06	07	08	09	10	11	12
13	14	15	16	17	18	19
20	21	22	23	24	25	26
27	28	29	30			

JULY						
MON	TUE	WED	THU	FRI	SAT	SUN
				01	02	03
04	05	06	07	08	09	10
11	12	13	14	15	16	17
18	19	20	21	22	23	24
25	26	27	28	29	30	31

AUGUST						
MON	TUE	WED	THU	FRI	SAT	SUN
01	02	03	04	05	06	07
08	09	10	11	12	13	14
15	16	17	18	19	20	21
22	23	24	25	26	27	28
29	30	31				

SEPTEMBER						
MON	TUE	WED	THU	FRI	SAT	SUN
			01	02	03	04
05	06	07	08	09	10	11
12	13	14	15	16	17	18
19	20	21	22	23	24	25
26	27	28	29	30		

OCTOBER						
MON	TUE	WED	THU	FRI	SAT	SUN
					01	02
03	04	05	06	07	08	09
10	11	12	13	14	15	16
17	18	19	20	21	22	23
24	25	26	27	28	29	30
31						

NOVEMBER						
MON	TUE	WED	THU	FRI	SAT	SUN
	01	02	03	04	05	06
07	08	09	10	11	12	13
14	15	16	17	18	19	20
21	22	23	24	25	26	27
28	29	30				

DECEMBER						
MON	TUE	WED	THU	FRI	SAT	SUN
			01	02	03	04
05	06	07	08	09	10	11
12	13	14	15	16	17	18
19	20	21	22	23	24	25
26	27	28	29	30	31	

● Bank holiday 
 ● Easter break 
 ● Christmas break 
 ● Class start 
 ● Placement test 
 ● Induction Day

Staff holidays is from 23.12.2022 until 02.01.2023

[www.studentcampus.ie](http://www.studentcampus.ie)



# PUBLIC HOLIDAYS IN IRELAND 2022

01/01 | New Year's Day

17/03 | St Patrick's Day

15/04 | Good Friday

18/04 | Easter Monday

02/05 | May Bank Holiday (May Day)

06/06 | June Bank Holiday

01/08 | August Bank Holiday

31/10 | October Bank Holiday

25/12 | Christmas Day

26/12 | St Stephen's Day







**STUDENT CAMPUS ENGLISH SCHOOL**  
**17-19, PATRICK STREET**  
**V94PX46**  
**LIMERICK, IRELAND**  
**INFO@STUDENTCAMPUS.IE**  
**+353 61 414 732**

**STUDENT CAMPUS MARKETING OFFICE**  
**3, MICHAEL STREET**  
**V944X26**  
**LIMERICK, IRELAND**  
**SALES@STUDENTCAMPUS.IE**  
**+353 61 214 625**

**WWW.STUDENTCAMPUS.IE**